

SQÜVA

SQ UV Activator

USER'S MANUAL



Be sure to read the manual before using this product.

Contents

1. Purpose of Use & Conditions for Use	4
1.1 Purpose of Use	
1.2 Conditions for Use	
2. CE & FCC	4
2.1 FCC warning statement	
2.2 CE statement	
3. Warnings	6
4. Warranty	7
5. Components and Specifications	8
5.1 Components	
5.2 Specifications	
6. Use	9
6.1 Components	
6.2 How to use	
6.3 Control part	
6.4 Sensor Explanation	
7. Storage Method	16
8. Cleaning and Sterilization	16
8.1 Cleaning and Sterilizing Fixture Driver	
8.2 Cleaning and Disinfection the Main Body	
8.3 Sterilization	
9. Troubleshooting	17



1. Purpose of Use & Conditions for Use

1.1 Purpose of Use



“WARNING: Modification of this equipment is not allowed”

The SQ UV ACTIVATOR is a product designed to increase hydrophilicity on implant surface.

1.2 Conditions for Use

• Condition of Use

- Temperature : 0 - 40 °C
- Relative humidity : 30 - 90 %RH
- Atmospheric pressure : 0 - 2,000 m (106 - 80 Kpa)

• Transport environment

- Temperature : 0 - 40 °C
- Relative humidity : 0 - 80 %RH

2. CE & FCC

2.1 FCC warning statement

• FCC Part 15.19(a)

This device complies with part 15 of FCC rules. Operation is subject to the following two conditions: (1) This device may not cause harmful interference, and (2) this device must accept any interference received, including interference that may cause undesired operation.

• FCC Part 15.105

This equipment has been tested and found to comply with the limits for a Class B digital device, pursuant to part 15 of the FCC Rules. These limits are designed to provide reasonable protection against harmful interference in a residential installation. This equipment generates, uses and can radiate radio frequency energy and, if not installed and used in accordance with the instructions, may cause harmful interference to radio communications. However, there is no guarantee that interference will not occur in a particular installation. If this equipment does cause harmful interference to radio or television reception, which can be determined by turning the equipment off and on, the user is encouraged to try to correct the interference by one or more of the following measures:

- Reorient or relocate the receiving antenna.
- Increase the separation between the equipment and receiver.
- Connect the equipment into an outlet on a circuit different from that to which the receiver is connected.
- Consult the dealer or an experienced radio/TV technician for help

- **FCC Part 15.21**

Changes or modifications not expressly approved by the manufacturer (or party responsible) for compliance could void the user's authority to operate the equipment

- **RF Exposure**

This equipment should be installed and operated with minimum 20 cm between the radiator and your body.

2.2 CE statement

- **RED Article 10.2**

This device can be operated in at least one MemberState without infringing applicable requirements on the use of radio spectrum.

- RF Range: 13,535 kHz ~13,587 kHz

- Max Output Power(E.I.R.P.): -27.46 dBm

3. Warnings

Warnings

- Please read the User's manual before using the product.
- Check all components after opening this product.
- Please install this product in a well ventilated place.
- Do not use it in uneven, sloping, or vibrating area.
- Do not use in water or wet areas.
- Do not touch the body and power plugs with wet hands.
- Do not pull the power cable when disconnecting the power plug, but hold the power plug and disconnect.
- Please connect a grounded wall outlet.
- Use input power in the range of AC 100 – 240 V, 50/60 Hz.
- Do not use adapters other than those provided.
- This product has been certified by the Electromagnetic Compatibility KC, CE and FCC
- This product complies with EM standards. However, electromagnetic interference may cause performance degradation when used improperly.
- Do not disassemble or separate except for experts designated by supplier.
(No warranty can be obtained if arbitrarily disassembled or separated)
- If the product displays an ozone warning on the LCD or smells strange (ozone smell), ventilate it immediately, remove the power plug, and contact your supplier.
- Do not put any substances other than FIXTURE in the TRAY.
(Risk of failure or electric shock)
- After reforming the FIXTURE, after the pump stops (approximately 30 seconds), change the other FIXTURE.
- It is recommended to use after 5 minutes when the machine works 3-4 times in a row. The temperature of the fixture is high after reforming, so it's recommended to store it back in the ampoule for about 1 minute ~ 1 and 30 seconds before use.
- Do not insert FIXTURE driver during product operation.
- Make sure to use products within 8mm diameter of FIXTURE.
- Use FIXTURE in combination with the FIXTURE support.
- Use the FIXTURE support in the correct position on the TRAY.
- Do not place objects on the TRAY.

- Do not place items on top of the product
- When operating the instrument, be careful not to cause external shock
- If the wire is damaged, stop using it and contact your supplier to replace it
- If your product smells of smoke or burning, please remove the power plug and contact your supplier.
- Be careful when installing the product
- Contact your supplier if there is a fault or damage
- If it is not used for a long time, remove it from the outlet and store it
- In case of failure, do not forcibly separate the closed TRAY and contact the place of purchase
- Do not remove the RFID CARD during use
- Please contact the supplier when the RFID CARD exceeds the limit.
- Dispose of the product in accordance with the laws of the country concerned
- Never use this product for any purpose other than its intended use
- The temperature of the FIXTURE driver is high after reforming, so be sure to wear latex gloves

4. Warranty

- UV LAMP : 700 hrs
- O3 FILTER : 1 years
- Product : 1 years

5. Components and Specifications

5.1 Components



No.	Description
1	SQ UV Activator
2	Adapter & Power Plug
3	FIXTURE Driver KIT
4	RFID CARD

5.2 Specifications

Category	Unit	Specification	Remark
Rated power input	-	AC 100 - 240V , 50/60 Hz	
Power consumption	W	137	
Adapter Output	V	DC 24	
	W	250	
Product size	mm	W336 x L185 x H330	
Product weight	kg	6	
Ozone accrual volume	ppm	Less than 0.05	
Reforming time	s	10	
Wavelength	nm	172	
RF Range	kHz	13535 ~ 13587	
RF Max Output Power(E.I.R.P.)	dBm	-27.46	

※ Values are measured with a tolerance of 10%

6. Use

6.1 Components

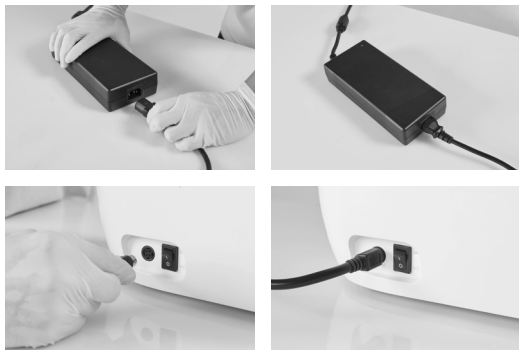


6.2 How to use



Check the SQUVA components

SQUVA / Adapter / RFID CARD
 Power Cord / FIXTURE Driver KIT
 User's manual



Connect the adapter and power cord.
 Adapter output "4Pin Jack" at the back of the body.
 (Pay attention to direction).



Plug the power cord into an outlet.



Turn on the power button at the back of the main body.



Insert the RFID CARD into the designated slot.



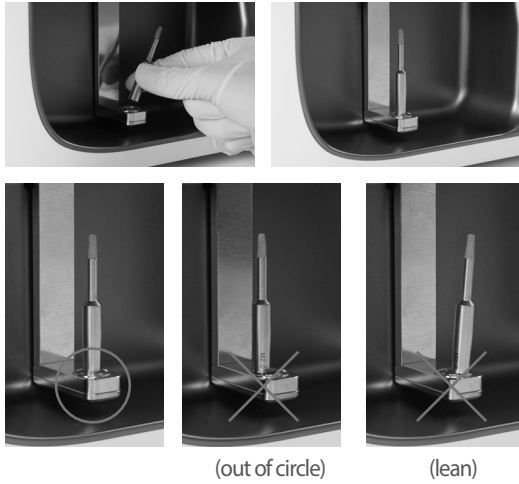
Press the "OPEN" button on the LCD.
(Make sure the TRAY is downward.)



Prepare a FIXTURE to be reformed.

Close the sterilized FIXTURE support by rotating it clockwise two to three times.

- (⚠ The FIXTURE support must be sterilized before use)
- (⚠ Do not allow FIXTURE to touch hands or other parts)
- (⚠ Handle the ampoule to prevent contamination)
- (⚠ Check that the FIXTURE is fully engaged in the FIXTURE driver. Incomplete tightening may cause FIXTURE to fall during process)



Place the FIXTURE support in the center groove of the TRAY.

(⚠ Ensure that it is correctly seated in the middle circle)



With the TRAY lowered, press the "START" button on the LCD screen to start the refinement.

(⚠ Ensure that FIXTURE driver is correctly engaged before pressing the "START" button)

(⚠ Does not work when tray is raised)

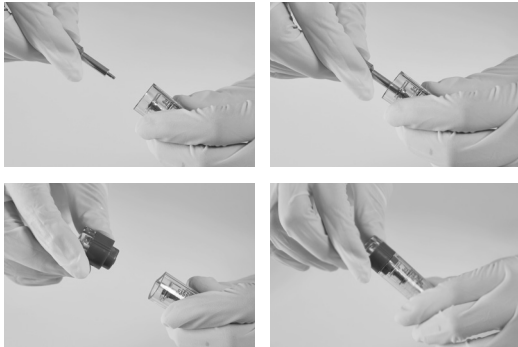


If "Complete" is displayed on the LCD screen, verify that the reforming has been completed. Remove the FIXTURE driver.

(⚠ When removing the FIXTURE driver, lean and take out the FIXTURE driver)

(⚠ Burn hazard could result if you hold the upper part of the FIXTURE Driver after work, so please hold the lower part of the driver (large area in the picture).

(⚠ The TRAY automatically comes down when the reforming is complete, and the TRAY automatically rises when the pump stops. Press the "OPEN" button to take out the FIXTURE driver from the TRAY that is closed)



Insert the FIXTURE mounted on the FIXTURE driver into the existing ampule and remove it by turning the FIXTURE support counterclockwise.

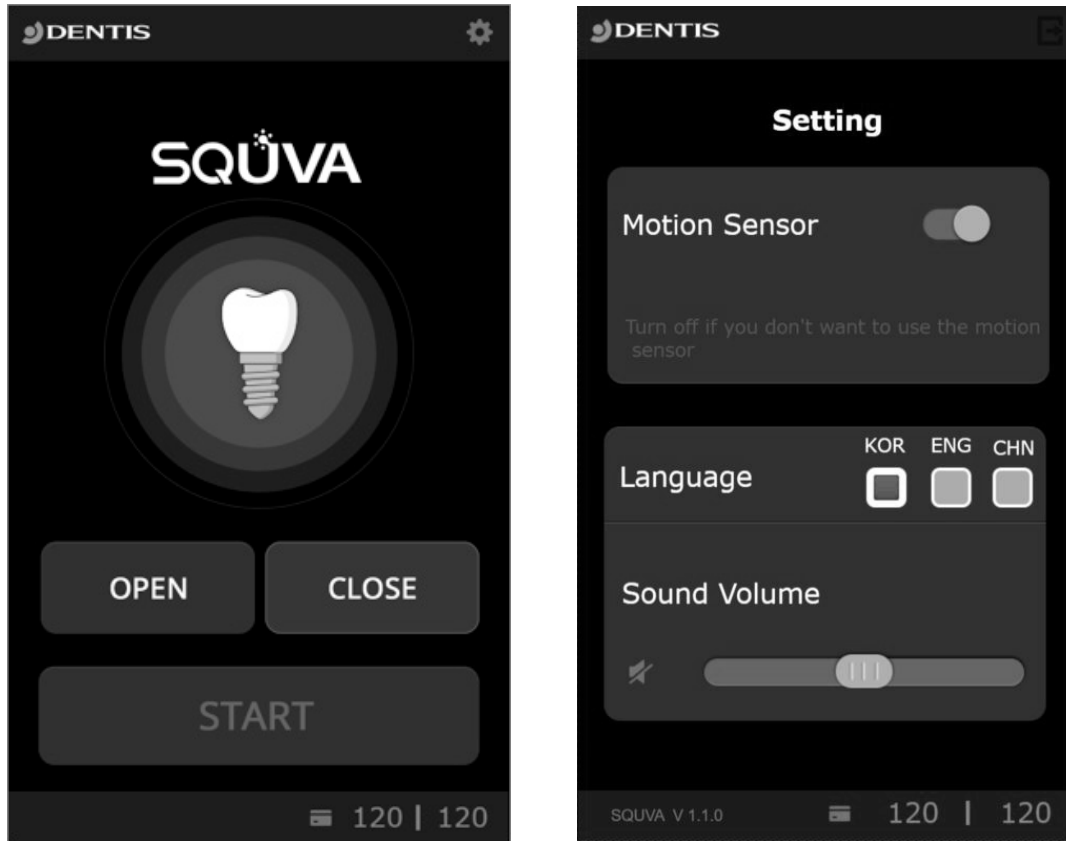
(⚠ Check that the FIXTURE is completely separated from the FIXTURE driver. Incomplete separation may cause FIXTURE to fall during movement)

Fit angle driver to reformed FIXTURE and install it on the patient



After use, close the TRAY using the "CLOSE" button.

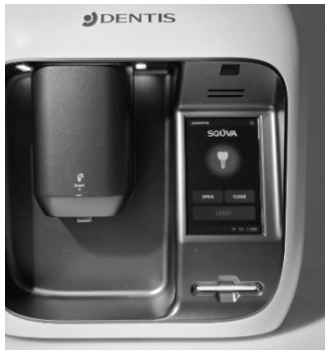
6.3 Control part



No.	Image	Explanation
1		Lower the TRAY to where the FIXTURE driver is to be placed.
2		TRAY with FIXTURE driver raised.
3		Reforming starts.
4		Display the number of RFID CARDS available. ※ when there are zero remaining, contact supplier to recharge the CARD. (Voice : Please charge the CARD.)
5		Motion sensor On/Off.
6		Select language(Korean, English, Chinese)
7		Adjust the Volume

6.4 Sensor Explanation

- ※ The "non-contact sensor" at the top of the LCD can detect the user's hand at a distance of 2 ~ 5 cm and perform "START" action. (Prevent infection by non-contact method)
- ※ When operating motion sensors, it is recommended to use the back of the hand.



Operation in the CLOSE state of the TRAY.

When the front of the motion sensor is detected by hand for more than 1 second (LED WHITE -> GREEN), pull the hand away after changing the LED (operation between 1 second and 2 seconds)

Return to original state after more than 2 seconds (LED GREEN -> WHITE): TRAY not working

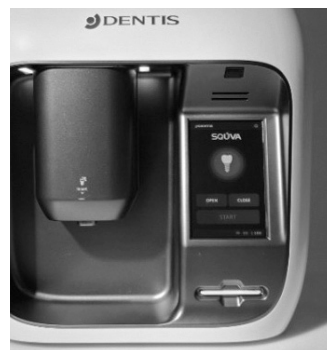


Operation with TRAY OPEN.

When the front of the motion sensor is detected by hand for more than 1 second (LED WHITE -> GREEN)

continuously for more than 2 seconds (LED GREEN -> BLUE)

LED change before hand removal



Operation with TRAY OPEN.

When the front of the motion sensor is detected by hand for more than 1 second (LED WHITE -> GREEN)

When operating, put the hand away before 2 seconds

※ Sensor operating distance : less than 5cm

(⚠ Be careful not to touch motion sensors to prevent infection.)

7. Storage Method

- Close and store the TRAY after use.
- Don't twist the power cord and store it.
- Please keep it away from the water.
- In case of an earthquake, do not store on a high shelf.
- After use, turn the power button off.
- If not used for a long time, keep the adapter and main body separately.

8. Cleaning and Sterilization

8.1 Cleaning and Sterilizing Fixture Driver


- The used kits and instruments should be cleaned with distilled or flowing water with a temperature of 30~40°C, using a brush for 20 seconds to wash away any remaining blood and external materials.
- Tools which have inner parts needs to be cleaned up, such as a torque wrench, should be dismantled to wash away any remaining blood and foreign materials
- Make 1% Tergazyme™ mixture mixed 1L 30~40°C water and Tergazyme™ 10mL in the cleaning water tank and keep the kits and instruments in the 1% Tergazyme™ mixture for 10 minutes. (using ultrasonic cleaning machine is more effective)
- The kits and instruments should be washed using distilled or flowing water (30 ~ 40°C) using a brush for cleaning 3 times.
- Use air blower, wipers or fabrics in order named to remove water on the kits and instruments. Finally, use alcohol cotton to remove water stain on the kits and instruments.

8.2 Cleaning and Disinfection the Main Body

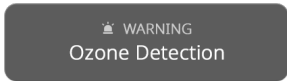
- Before and after using the product, sterilize the contents of FIXTURE KIT (FIXTURE support, etc.) and FIXTURE CASE.
- The following substances cannot be used :
 - High concentration organic and inorganic acids, chlorinated hydrocarbons

8.3 Sterilization

- Before and after using the product, sterilize the FIXTURE driver and FIXTURE case.
- Autoclave by adding FIXTURE case and FIXTURE driver
- Sterilization condition (Please refer to the sterilization methods for each country)

Sterilization condition	
Operating condition <ul style="list-style-type: none"> • Temperature: 132°C • Pressure: 150kPa (1.6 kgf/cm²) • Gravity: 15 min, pre vacuum: 8 min • Dry: 30 min 	Autoclave 

9. Troubleshooting

No.	Problem	Cause	Solution
1	The screen does not turn on	Power failure	Make sure AC power is supplied. (AC 100 – 240 V, 50/60 Hz)
		The adapter is not connected to the main body	Connect the adapter to the main body
		If the power cord is not properly engaged	Check the connection between the power cord and the adapter. Connect the power cord to a multi-tap or AC power source.
		Etc.	Please contact your supplier and AS representative.
2	the button does not work	LCD issue	Please contact your supplier and AS representative.
3	The sensor is not operating	Operational Distance Error	When operating the sensor, operate it within 5cm.
4	TRAY does not work	-	If the TRAY does not work after operating the "OPEN" and "CLOSE" buttons, contact your place of purchase and AS representative.
5	"Ozone Detection" error message 	Ozone generation	Please stop the product and ventilate it. Check that the product is fully ventilated when reusing, stop the product if the same symptoms occur, and contact your supplier and AS representative.
			Please contact the place of purchase and the person in charge of AS for replacement when the ozone filter has reached its end of life.
6	"Lamp communication" error message 	Nonoperating	Please contact your supplier and AS representative.
7	"Actuator location" error message 	-	Please contact your supplier and AS representative.
		Etc.	Please contact your supplier and AS representative.
8	Product damage	-	Please contact your supplier and AS representative.
9	If the RFID CARD is not recognized 	RFID CARD error	Please put the RFID CARD back in.
		When CARD availability has exhausted	Please recharge your CARD. Please contact supplier and AS representative.
		Etc	Please contact your supplier and AS representative.
10	Etc.	-	Please contact your supplier and AS representative.





www.dentisimplant.co.kr/eng



Tel. +82-1899-2804 | Fax. +82-53-583-2806
99, Seongseoseo-Ro, Dalseo-Gu, Daegu, Korea



Tel. +1-323-677-4363 | Fax. +1-323-677-4366
6 Centerpointe Drive, Suite 600 La Palma CA 90623

©2021 DENTIS CO.,LTD. All Right Reserved.
Specifications are subject to change without notice.
Trademarks are the property of DENTIS CO., LTD. Or their respective owners.

EQ5QPP-PM020
(V1.0)Mar/02/2021